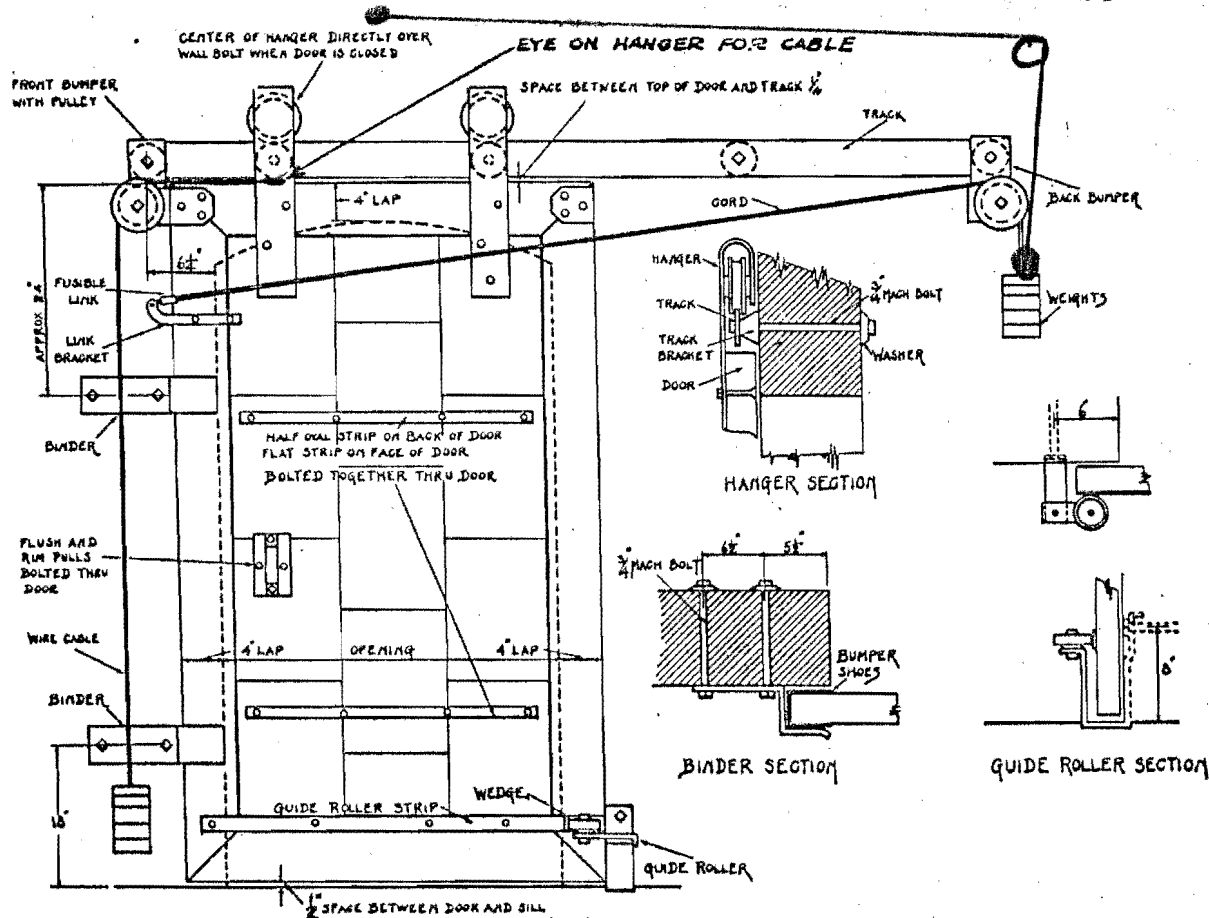


"PETERS A" No. 3 FIRE DOOR FIXTURES



Place door over opening lapping 4 inches on each side and at top with 1/2" blocking between door and sill and 1/4" strip on upper edge of door. Place track on this strip with center of first hole 6-1/4" from edge of opening. (The end of track with holes closest together is the front end.) Drill holes thru wall. Bolt track in position with 3/4" bolts, using track brackets between track and wall.

Attach Bumpers with wheels with bolts in ends of track.

With door in closed position place hangers on track directly over wall bolts. Drill holes and attach hangers with 1/2" flat head bolts. Doors for openings over 6 foot wide require three hangers.

With door closed against front bumper place binders against edge of door as shown. Drill thru wall and attach with 3/4" bolts.

Chip out wall and sill so that frame of guide roller will set flush with wall and sill. Drill bolt hole and attach. Adjust the roller so that the door will be held close to the wall against the wedge at end of the strip when the door is closed. Apply guide roller strip with flat head wood screws.

Place the oval strip on back of door with flat strip on front of door, bolted together with 1/4" flat head stove bolts, the upper set 1/3 down from top of door and lower set 1/3 up from bottom of door.

There are four bumper shoes, one opposite each bumper and binder. Each shoe is in two pieces. Apply with flat head wood screws.

Apply flush pull on wall side of door and rim pull on front of door bolted together with flat head stove bolts.

Fasten link bracket to front edge of door with carriage bolts, so link will come ahead of door.

Attach cord to fusible link and to weight at back end of track. Attach cable to eye on hanger and to weight at front end of track.